

BMW LITHUANIAN KARTING CHAMIONSHIP, ROUND 5  
 ROTAX MAX LITHUANIA CHALLENGE, ROUND 5  
 BALTIC KARTING ACADEMY CUP, ROUND 5  
 ARTKART CUP, ROUND 5

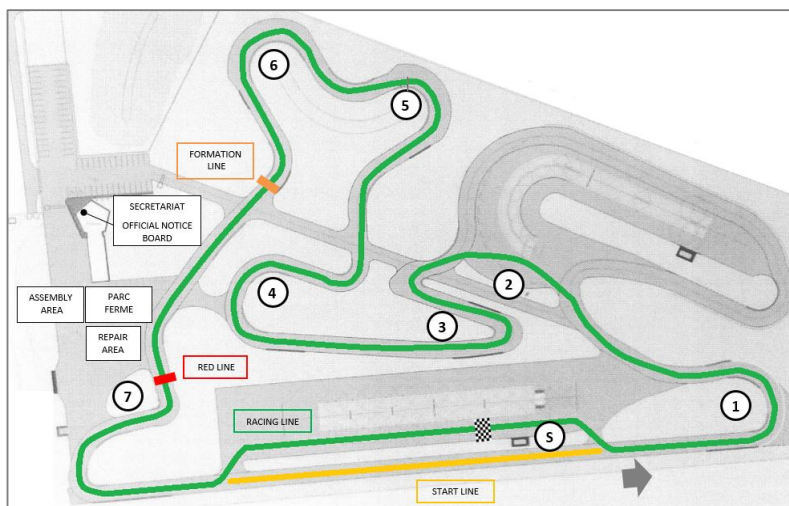
# BRIEFING

09-11 / 09 / 2021, SIAULIAI

**From** Clerk of the Course  
**To** All Participants

**Document** 1  
**Date** 09/09/2021, 08:00

## 1. CIRCUIT



Driving direction	anti-clockwise
Pole position	left
Length	1208 meters
Turns (left/right)	16 (8/8)
Marshals' posts	8
"Formation line"	Sector 6
"Red line"	Sector 7
"Yellow line"	Sector 7

- 1.1 The main post of the Marshals' - near Finish Line.
- 1.2 Outside help can only be provided in the "Repair Area". Location: exit from the Track.
- 1.3 **Qualifying.** If a Driver stops in the Repairs Area or in the Servicing Park. It will be final. He/She shall not be allowed to start again under any circumstances.

## 2. ASSEMBLY AREA

- 2.1 Access to the Assembly Area will end five minutes before the time scheduled for the start of the Race.
- 2.2 At the entrance to the "Assembly area", it is allowed to start the engine - no longer than 5 seconds.

### FRONT BUMPER

- 2.3 Drivers of all classes must present the removed front bumper to the Marshal before entering to the "Assembly Area".
- 2.4 The driver is not allowed to get out of Karting after the finish until the Marshal has checked the front bumper. If the bumper is not in correct position, a **penalty - 5 seconds**. This time penalty is not susceptible to protest.

## **MECHANICS**

- 2.5 In the categories where engines are equipped with an on-board starter, the Mechanics must leave the Assembly Area 3 (three) minutes before the time scheduled for the start of the Race.
- 2.6 If a Driver is unable to start from the Assembly Area after the display of the green flag and if he requests the intervention of a Mechanic, he will be authorised to leave the Assembly Area only on the orders of a Marshal and he will take the start from the back of the formation, irrespective of the number of Formation Laps.

## **3. STRATING PROCEDURE**

- 3.1 **Number of formation laps - 1 (one).** Overtaking during formation laps is prohibited. **Penalty - 10 seconds.**
- 3.2 The leader must start of the formation from the "Formation Line" (Sector 6).
- 3.3 "Red line" - (sector 7). During the "Rolling start" the driver who has not managed to regain his starting position till the "Red Line" must stay in the position in which he is at that time and only in the line from which he should have started. Other Drivers may not prevent him from regaining his starting position.
- 3.4 During the "Rolling start", acceleration is allowed from the "Yellow Line". **Penalty - 3 seconds.**
- 3.5 Any attempts to jump the start or delay it and any karts leaving the lane - movement at an unstable speed before the lights are switched off will be **penalized - 10 seconds.**
- 3.6 Start signal - the moment when the red lights switch off. If the red lights remain on, the additional formation lap is driven and the start procedure is repeated.

## **BRIGGS JUNIOR / BRIGGS MASTERS. STARTING GRID**

- 3.7 Starting grid. Semifinal - according qualifying results and categories (1st BRIGGS JUNIOR, 2nd BRIGGS MASTERS). Final - according semifinal results and categories (1st BRIGGS JUNIOR, 2nd BRIGGS MASTERS).

## **KZ2. PRACTICE OF START SIMULATION**

- 3.8 All drivers must do this safety and cannot hinder other participants. Participants can try the simulation of start procedure after the Practice and Qualifying finish. The simulation can be tried behind of Turn 1 till exit to the Parc Ferme. The maximum number of tries during one session - 3 (three) times.

## **4. GENERAL SAFETY**

- 4.1 This flag should normally be waved, as an indication to a Driver that he is about to be overtaken.
- 4.2 Outside assistance is prohibited during all competitions except Repair Area. Penalties - exclusion of the race (Black Flag).
- 4.3 Driver leaving the track must inform by raising their hand in advance.

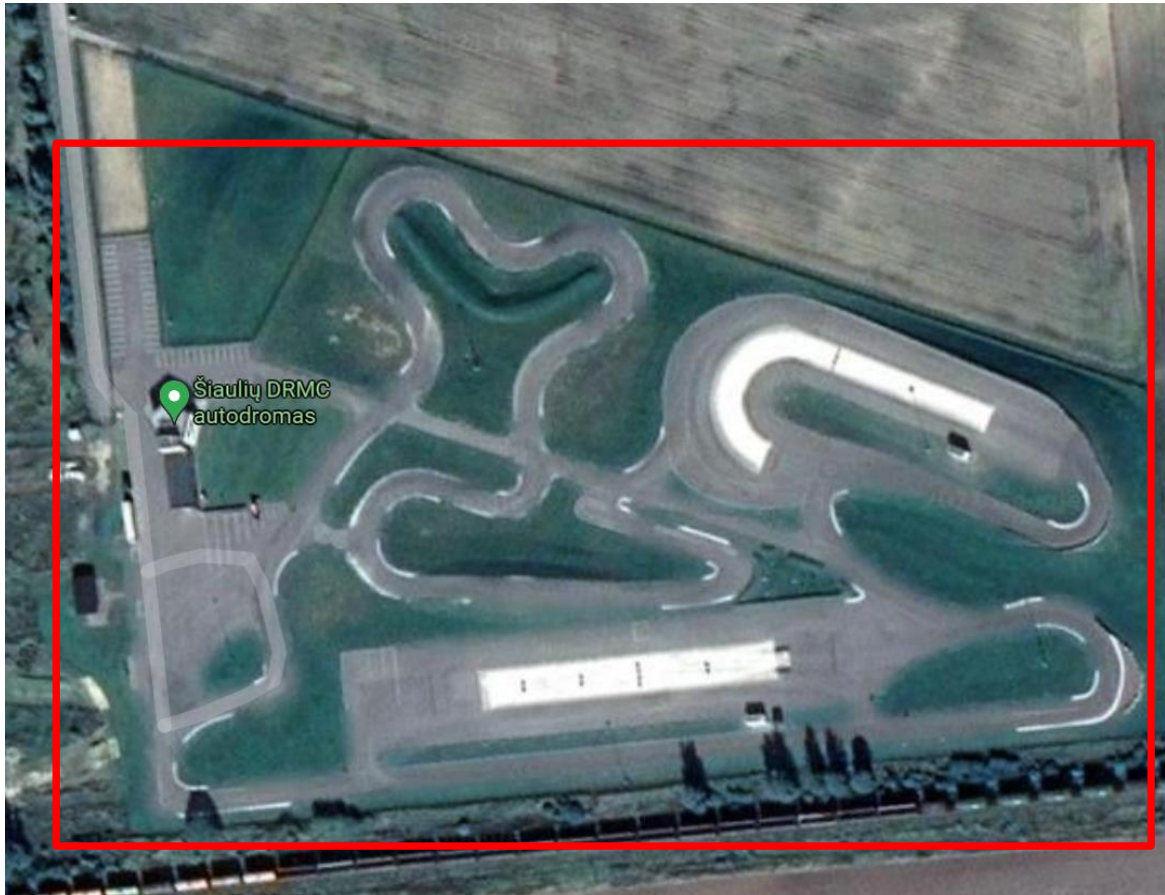
## **SUSPENDING OF THE RACE - SLOW**

- 4.4 When the order is given to neutralise the Race, all observation posts will display waved yellow flags and a "SLOW" board (yellow board with the word "SLOW" written in black), which shall be maintained until the neutralisation is over.
- 4.5 All the competing karts must then line up behind the leading kart, and overtaking is strictly forbidden. Overtaking will be permitted only if a kart slows down because of a serious problem. **Penalty - 10 seconds.**
- 4.6 Restart. On approaching the Line, where a green flag will be waved by the Clerk of the Course, the Drivers may accelerate only after crossing the "yellow line" preceding the Line.

## **ROTAX MICRO**

- 4.7 If the driver qualifies slower than 107% from his class winner, in case special "Rotax Micro Nano" session can be organized for this drivers. "Nano" session karts must fully comply with all MicroMax class regulations. These drivers are classified after the last MicroMax class drivers.

**5. EVENT'S AREA LIMITS**



**6. SUPPLEMENTS**

The briefing material can be corrected or added at any time before the start of the race. This will be announced in a bulletin.

---

Clerk of the Course  
Marius MIKUSEVICIUS

**GOOD START !**